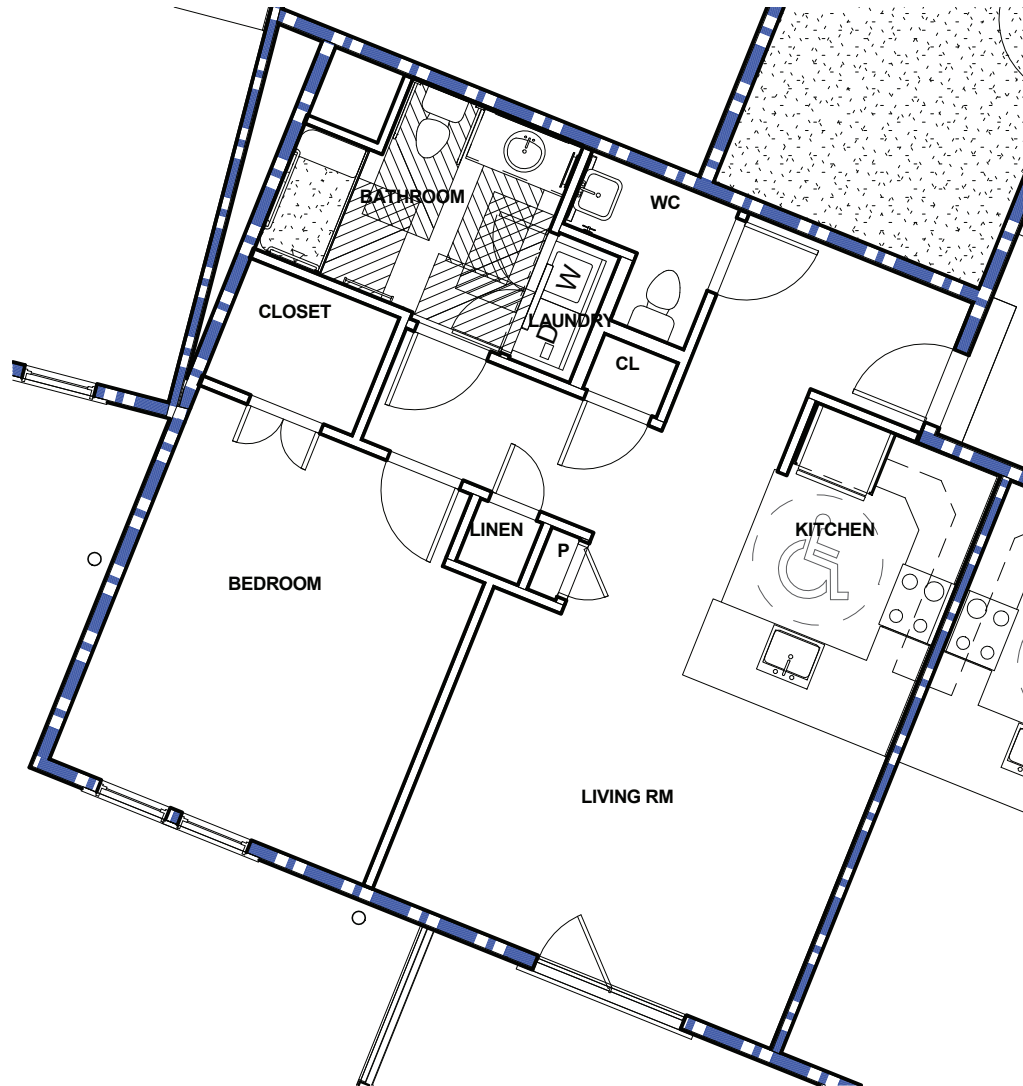


# The Holden IV



RESIDENCE #:

MONTHLY FEE:

MOVE-IN DATE:

1 BD / 1.5 BA

TOTAL AREA RANGE

850-859 SQ. FT

Internal measurements- approximate living space

Carolina Bay at Autumn Hall  
5553 Old Garden Road  
Wilmington, NC 28403  
Phone: (866)-455-0599  
(910)-726-2905