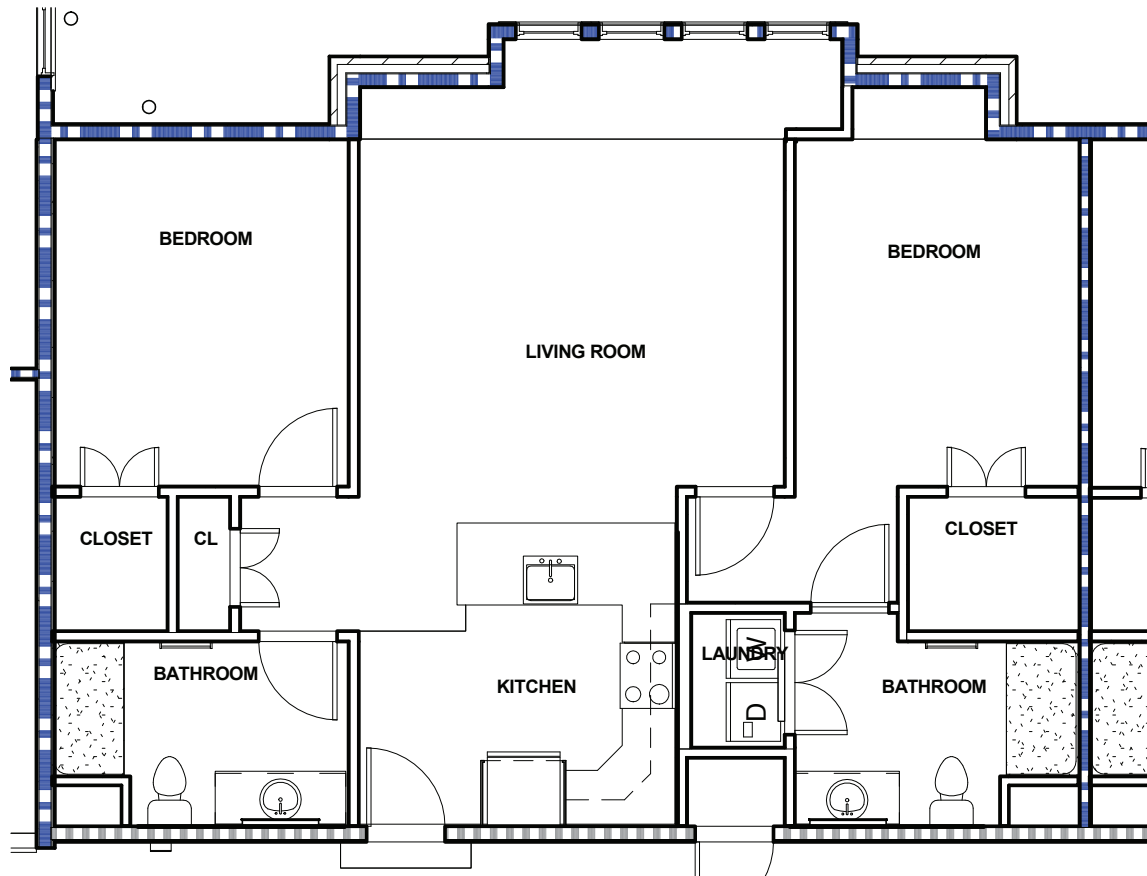


The Brunswick I



RESIDENCE #:

MONTHLY FEE:

MOVE-IN DATE:

2 BD / 2 BA

TOTAL AREA RANGE

1106 - 1107 SQ. FT

Internal measurements- approximate living space

Carolina Bay at Autumn Hall
5553 Old Garden Road
Wilmington, NC 28403
Phone: (866)-455-0599
(910)-726-2905